

**RED** **MACHINE s.r.o.**

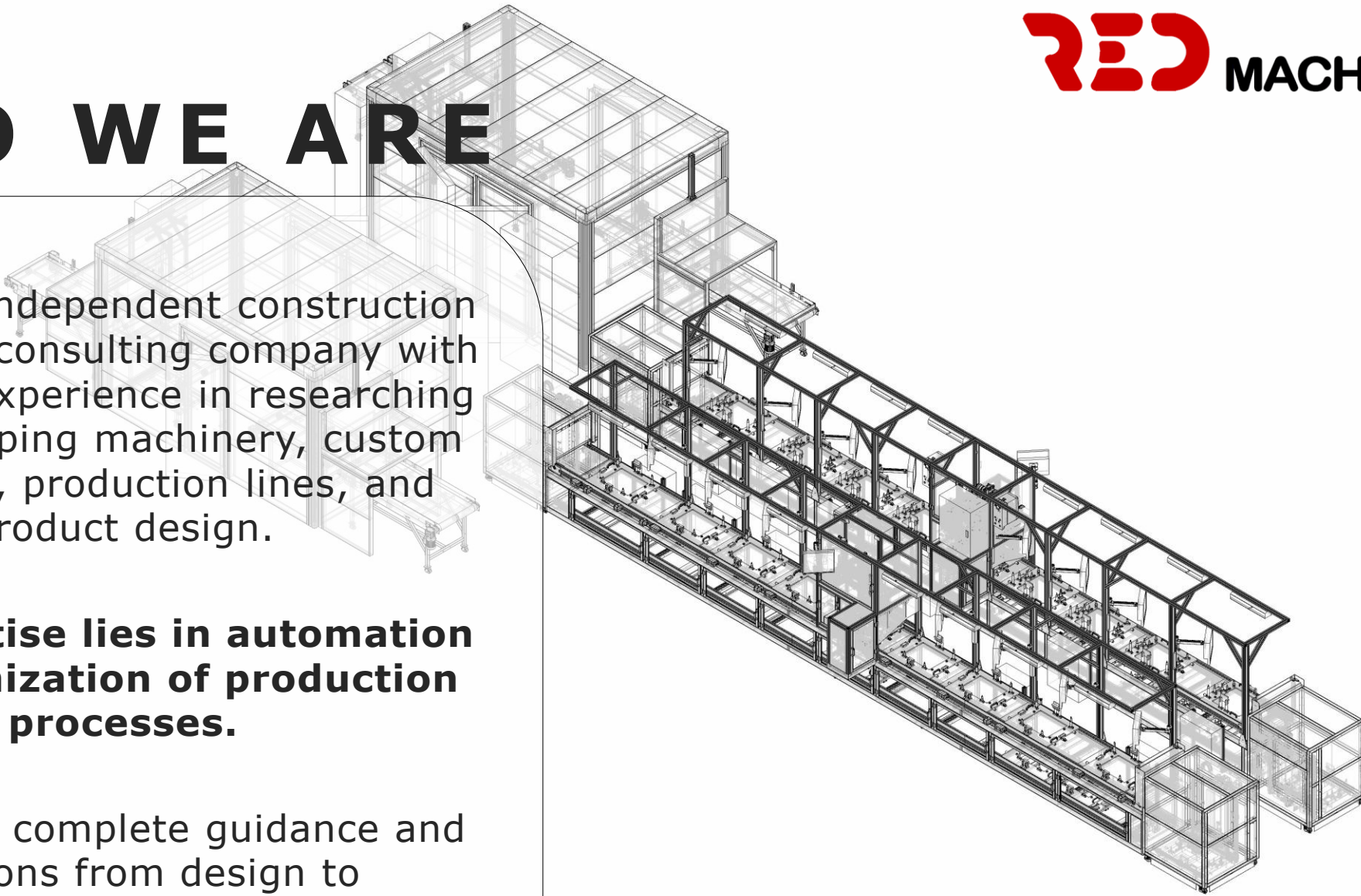


# WHO WE ARE

We are an independent construction and design consulting company with extensive experience in researching and developing machinery, custom machines, production lines, and product design.

**Our expertise lies in automation and optimization of production processes.**

We provide complete guidance and solutions from design to implementation.



# OUR PROFILE



A small and dynamic company based in the Czech Republic, dedicated to delivering comprehensive and efficient solutions through our extensive network of partners.



Whether small-scale or large project, we are equipped to handle them all.



Proud of our long history of successful implementations across Europe, America, Asia and Australia.



Join our network and gain quick access to a world of expertise and innovation.

# OUR MISSION

## Outsourcing Reduction



Our strategy to minimize outsourcing and reduce waste ensures substantial annual savings for your business.

## Process Optimization



We aim to optimize your processes to achieve substantial reductions in operational expenses.

## Continuous Improvement



Our unwavering commitment to continuous improvement drives us to consistently enhance your processes, resulting in superior products and services.

# BENEFITS



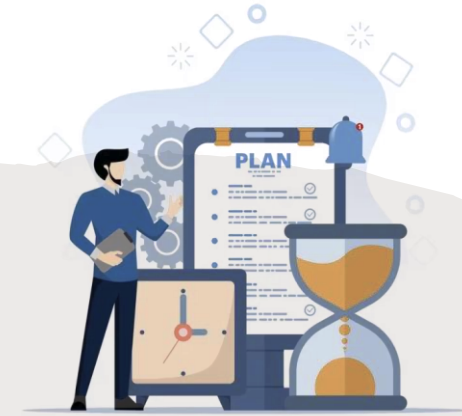
## Safety First

We prioritize safety in all aspects of our work, ensuring that our solutions meet the highest safety standards to protect your workforce and assets.



## Cost Reduction

By implementing efficient and innovative solutions, we help you significantly reduce costs without compromising on quality or performance.

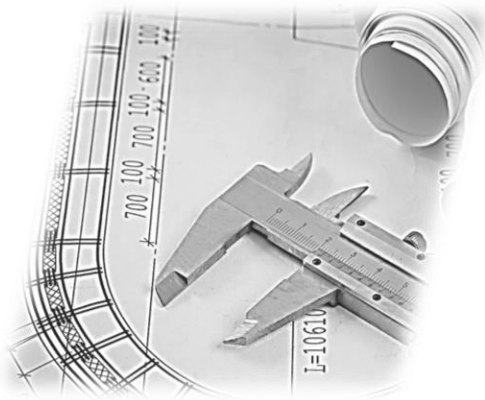


## Optimized Time

We understand the value of time in your operations. Our streamlined processes and effective project management ensure timely delivery and optimal use of resources.

# OUR SERVICES

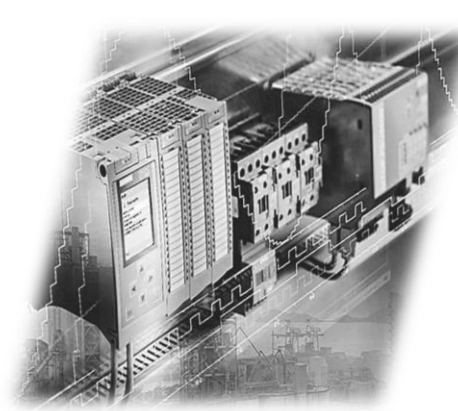
Mechanical construction



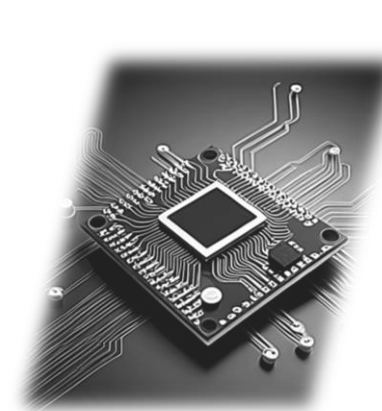
Electrical engineering



PLC programming



Programming embedding



Product development



Industrial engineering



Quality Management



Project Management



# OUR GOALS

## **Building Long-Term Partnerships**

We are committed to establishing long-term partnerships, guiding you through every phase of your project—from design to production to commissioning.

## **Tailored Solutions for Your Needs**

Our experts meticulously analyse your requirements and propose customized solutions to meet your specific needs.

## **Expertise and Confidentiality**

We leverage our deep expertise to tackle complex challenges while diligently safeguarding the proprietary knowledge of our customers and partners.

# SOME OF OUR PARTNERS AND SUPPLIERS





# RED MACHINE s.r.o.



**DANIELA VASATKOVA**  
Sales Manager

[daniela.vasatkova@redmachine.cz](mailto:daniela.vasatkova@redmachine.cz)  
[www.redmachine.cz](http://www.redmachine.cz)